

Children's Cabinet

December 14, 2023

Agenda

- Welcome and Introductions
- Vote on adoption of November meeting minutes
- Children's Behavioral Health System of Care Update
- Children's Cabinet Meeting Agenda Discussion – Review 2023 and Discuss 2024
- Public Comment
- Adjournment



Rhode Island Behavioral Health System of Care for Children & Youth

**Children's Cabinet Presentation
December 14, 2023**

**RHODE
ISLAND**

Agenda: Behavioral Health System of Care for Children & Youth

01

Mobile Response and Stabilization Services (MRSS): Programmatic and Data Updates

04

Questions & Feedback

02

Community-Based Intensive Care (CBIC) Program Updates

03

Family Engagement Organization Presentation

Mobile Response and Stabilization Services (MRSS) and Community Based Intensive Care (CBIC) Program Updates

Mobile Response and Stabilization Services (MRSS)

The Mobile Response and Stabilization Services (MRSS) model is a **youth-and-family specific** crisis intervention model that provides immediate, on-site intervention and support to children and youth experiencing a behavioral health crisis.

- MRSS was highlighted in SAMHSA's **National Guidelines for Child and Youth Behavioral Health Crisis Care** publication, released in November of 2022.
- MRSS was identified as a best practice in the 2018 **National Association of State Mental Health Program Directors in Making the Case for a Comprehensive Children's Crisis Continuum of Care**.
- The MRSS model has been shown to be effective in reducing hospitalization and out-of-home placement for children and youth in crisis. Studies have also shown that the model is cost-effective and can lead to improved outcomes for children and families. The MRSS model has been implemented in a number of states across the country, and there is growing interest in expanding the model to other communities.

MRSS in Rhode Island: The First Year

- ➔ First intake through SAMHSA Grant: 11/15/22
- ➔ Current Providers:
 - Tides Family Services
 - Family Services of Rhode Island
- ➔ Certified Community Behavioral Health Clinic (CCBHC) system transformation

Ongoing planning efforts are also aligned with the larger CCBHC system transformation that will be fully implemented in FY24. This includes:

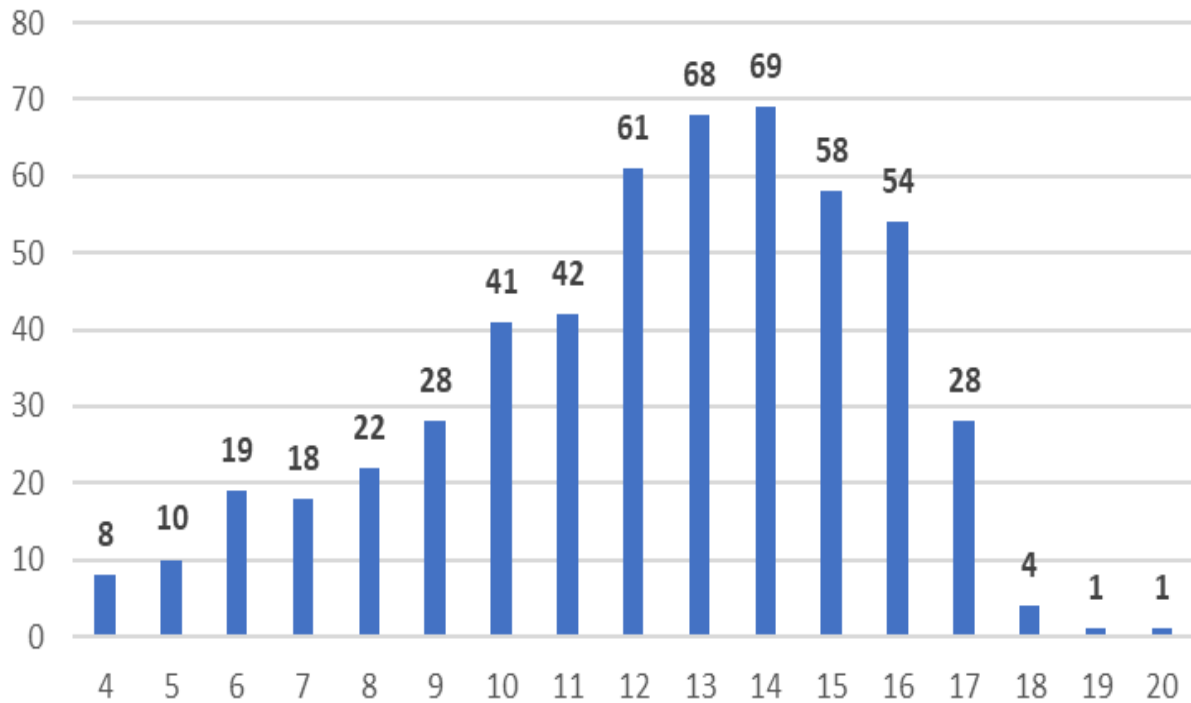
 - Preparing for the transition to a Medicaid rate, as mobile crisis is a required service of CCBHCs.
 - Aligning the Children's MRSS activities with CCBHCs through official Designated Collaborating Organization (DCO) relationships

MRSS

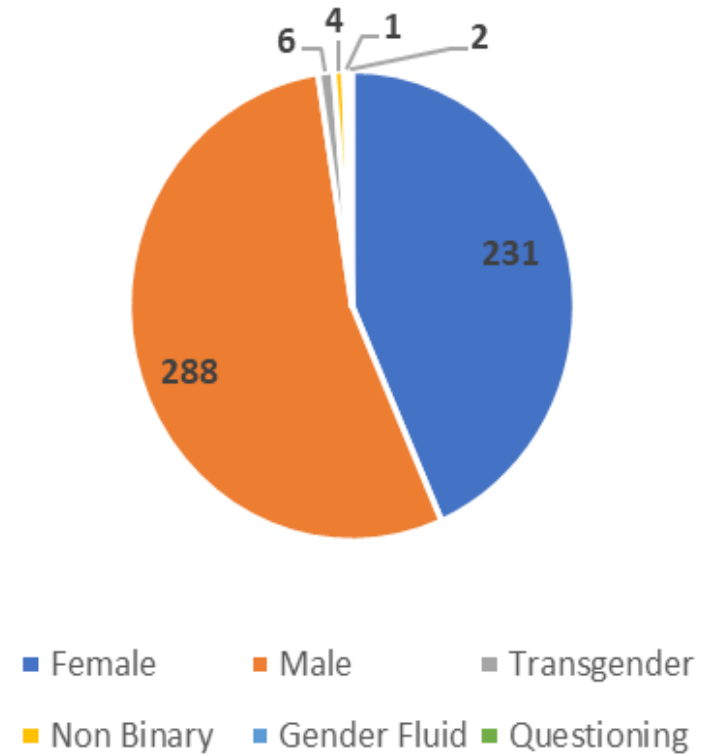
(11/15/22 to 12/08/23)

Number of Children Served at Each Age

As of 12/8/23 (n=532)



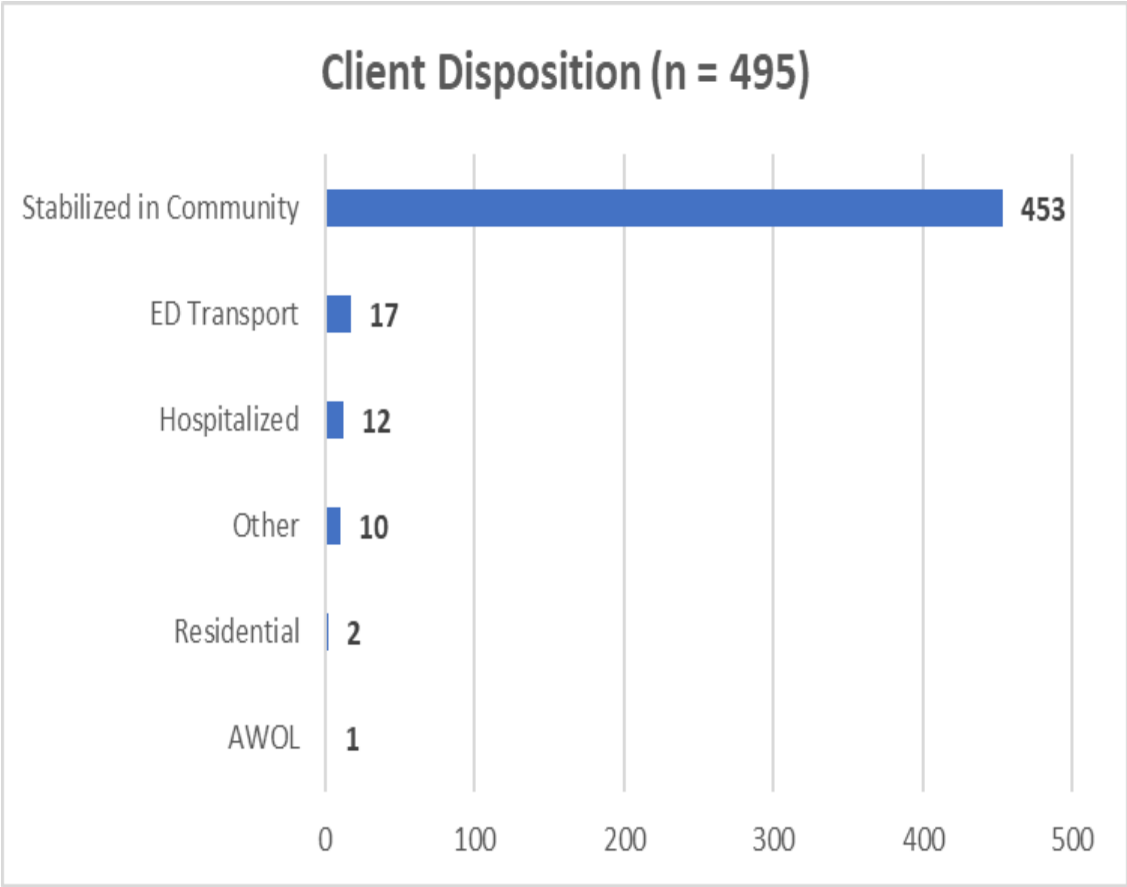
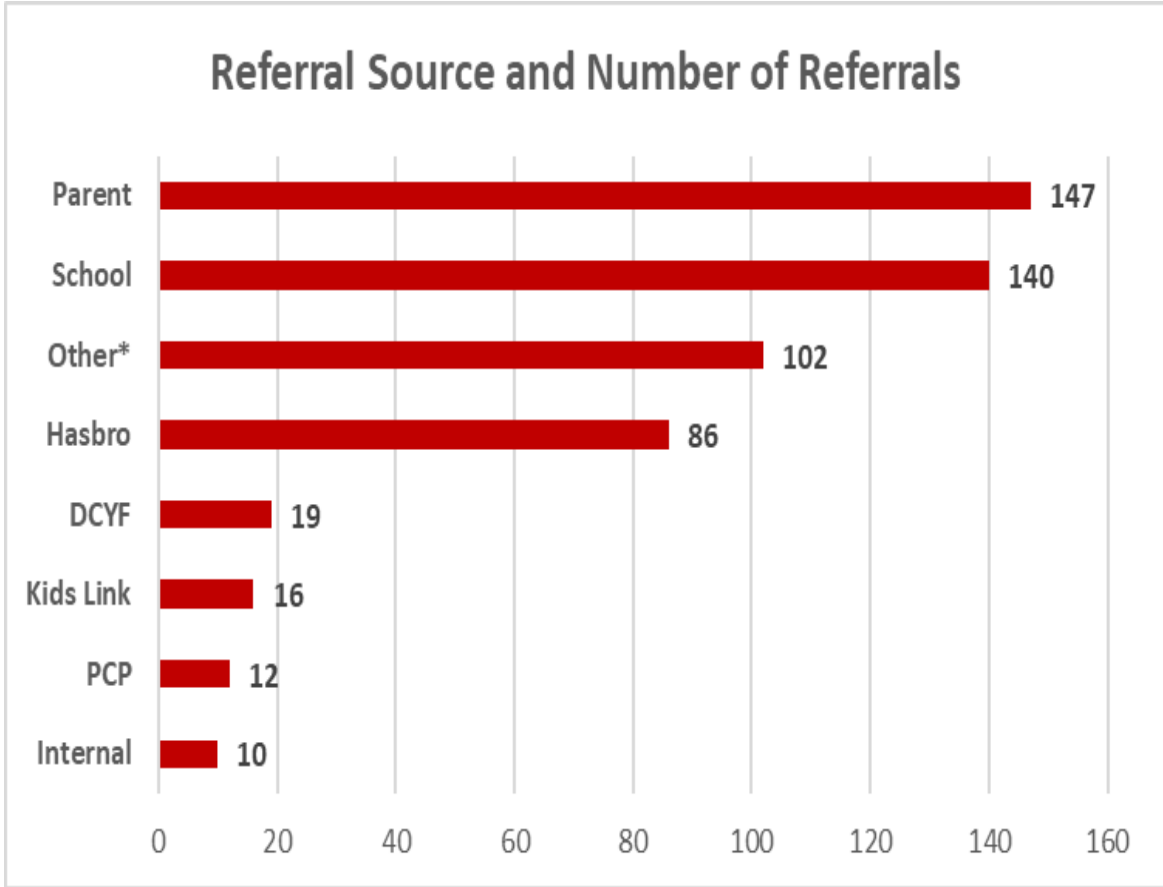
Client Gender



MRSS

(11/15/22 to 12/08/23)

92% Stabilized Within the Community



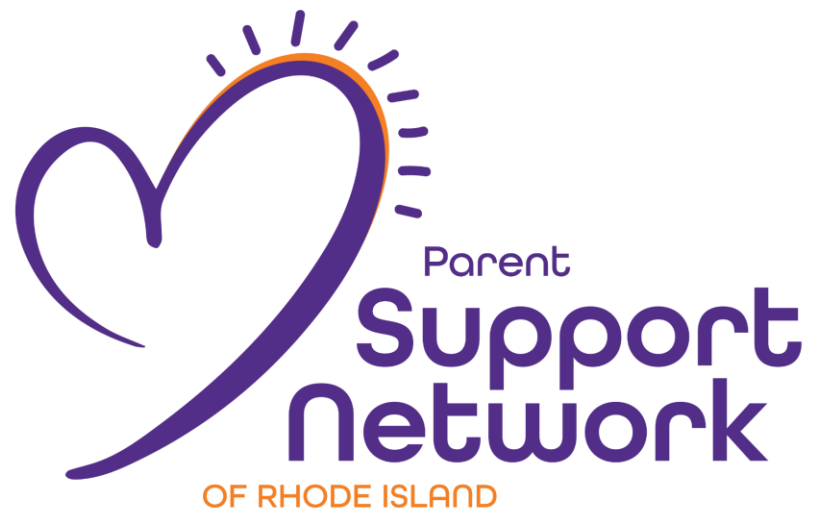
*Other includes behavioral health agencies, therapists, psychiatrists, other hospitals, Family Court, FCCP, etc

Community-Based Intensive Care (CBIC) Program

- EOHHS issued a Request for Proposal (RFP) for Community-Based Intensive Care (CBIC) on April 3, 2023, which closed on May 1, 2023.
- This RFP was for a home and community-based service that is very intensive and works with the most complex behavioral health difficulties with children in order to maintain them in their home or step them down from psychiatric hospitalizations or intensive residential programs.
- We are pleased to announce that Community Care Alliance has been awarded the contract and will be working with Tides Family Services to carry out the program – and it will begin in the new year.



Parent Support Network Family Engagement Organization Updates



RI CHILDREN'S
BEHAVIORAL HEALTH
SYSTEM OF CARE



FAMILY

ENGAGEMENT
WORKGROUP

Workgroup - Charter Summary

Family Engagement Workgroup

- Build family partnership in planning, implementation, and evaluation of the Children's Behavioral Health system of care
- Provide ongoing policy and practice input
- Recommendations to the RI Executive Office of Health and Human Services (EOHHS)
- RI Children's Behavioral Health System of Care Service Initiative, Steering Committee.

Workgroup – Membership

All levels of Family members are included

- Birth related, foster and adoptive, who are raising or have raised children/youth, and young adults
- Who have the lived experience of serious emotional, behavioral, and mental health challenges
- Who have experience navigating and accessing an array of children's mental health treatment services and other interacting child and family service systems.
- Type of families and the roles they are excited to participate in.
- Multi-service system involvement- special education, child welfare, social services, substance use, juvenile justice /Justice system.
- Family Support Partner - family support workforce working within children's behavioral health



The Family Engagement Workgroup

Brenda Alejo - Family
Engagement Coordinator

Family Engagement Workgroup Responsibilities

The primary responsibilities of the family and young adult members will be

- To commit to participate in monthly meetings and work together based on mutually agreed upon established ground rules and assurance of being trauma informed as a workgroup.
- Be open to receiving ongoing education around key system of care topics delivered by National and State SOC consultants and community partners.
- To utilize their voices and experiences to inform, evaluate and provide state policy and practice recommendations and responsive strategies to improve children's behavioral health system of care.

Family Engagement Workgroup Responsibilities

To give input and participate in annual educational policy and public awareness campaign activities.

To participate in Annual Family Leadership Meeting and provide strategic direction for the SOC.

Members will have opportunities to represent the workgroup at the SOC Steering Committee, SOC Workgroups, and all SOC activities, including family workforce activities, and will receive additional stipends and reimbursement as family and youth leader representatives.

Our First Year Key Topics

- Public Awareness of children's behavioral health system of care-social marketing efforts
- Navigating children's behavioral health continuum of care - Wraparound, FCCPs, mobile crisis, and intensive home services
- Policy system reform with educating state policy makers –key priorities and recommendations
- Evaluation of the system of care – policy and practice with emphasis on all system of care components with focus on disparities and family satisfaction

RI Children's Behavioral Health System of Care Family Engagement Support Group



Tuesdays 2 pm to 3:30 PM
At PSN Warwick & Virtual

Questions & Feedback

Children's Cabinet Agendas: 2023 Review & 2024 Planning

Children's Cabinet Approach

How the Children's Cabinet can support progress on key goals

- Unique perspective on cross-agency projects requiring multiple Cabinet agencies to participate and contribute to achieve success
- Opportunity for multi-system feedback and engagement
- Public engagement on key strategies or projects

Approach: Identify existing cross-agency projects that are aligned with the Governor's key goals and elevate to the Children's Cabinet, with the goal of using the Cabinet to advance efforts across agencies, support engagement, and provide Cabinet-level feedback on a regular basis.

Focus Areas for the Children’s Cabinet, aligned to Governor McKee’s 2030 Plan and Key Goals

Governor’s McKee’s Key Goals

Match MA levels of achievement

Project: Early Childhood Care and Education Strategic Plan

Governance: Governor’s Office, EOHHS, RIDE, RIDOH, and DHS, advised by the Early Learning Council

Project Manager: Kayla Rosen (GO)

Core Team:

- DHS
- RIDE
- RIDOH
- EOHHS

Improve health outcomes

Project: Rhode Island Behavioral Health System of Care for Children’ and Youth

Governance: EOHHS, advised by a public Steering Committee

Project Manager: Marti Rosenberg and Ellie Rosen (EOHHS)

Core Team:

- DCYF
- RIDOH
- BHDDH
- RIDE

Increase per capita income

Project: PrepareRI/RI Reconnect/out of school learning

Governance: OPC, RIDE, and DLT, advised by the Governor’s Workforce Board and Board of Education

Project Manager: Julissa Disu (GWB/DLT), Guerds Jean (RIDE), OPC

Core Team:

- OPC
- DLT
- RIDE

Increased, aligned integrated data capacity to measure impact and evaluate performance: Led by DOA, aligning and leveraging the EOHHS Data Ecosystem and the State Longitudinal Data System to measure performance across core initiatives.

2023 Agenda Review

Month	Early Childhood	Children's Behavioral Health	Learn365 and PrepareRI	Additional Timely Agenda Items
January				FY24 Governor's Proposed Children's Budget
February				
March				Medicaid Renewals Briefing
April				
May				
June				FY24 Budget Highlights for Children & Youth
July				
September				Medicaid Renewals Update
October				Comprehensive Economic Development Plan
November				Addressing Adolescent Substance Use
December				

Planning for 2024

Discussion

- In addition to our Focus Areas, what topics would you like to see on Cabinet agendas in 2024?
- How can the format and structure of Cabinet meetings better support the shared goals?
- How can the Cabinet meetings be more accessible and better support community engagement?

Public Comment

